



**Catalogue No. - RW0U020T1K**

**Description – RenseWAI U24**

RenseWAI U24 water system produces Reverse Osmosis (RO) water or Type 3 grade plus Type 1 grade water as per ASTM standards, directly from potable tap water, in a single integrated model.

RenseWAI U24 water purification systems are compact and powerful. They are specifically designed for laboratories that demand a balance between cost of ownership and exceeding their purified water requirements.

### **Features**

#### **Simple installation and maintenance**

- RFID tracking of consumables (RO Pack included) for enhanced management
- Easy to remove consumable access cover.
- Automatic RO membrane cleaning cycles (Cl2 and pH cleaning)

#### **Reliable water quality and stable system performance**

- Stable RO permeability over a wide range of temperatures
- Diversion to drain if quality of RO permeate falls below a pre-set set-point
- Automatic hourly recirculation of ultrapure water

#### **Data traceability**

- Automatic data backup for up to 2 years
- Easy data transfer through multiple interfaces, such as LAN, USB, etc.





### **Low running cost**

- Environmentally friendly. High recovery rate
- Self-maintenance functions for maximum RO membrane effectiveness and lifetime
- RFID record of cartridge history for predictable consumable replacements
- Highly-efficient cartridge

### **Compact and small footprint**

- An in-built single pretreatment P Pack
- Placement flexibility - on the bench or on a wall
- All-in-one design.
- Space-Saver

### **Main Components**

#### **1. Cartridge**

- Optimized flow design to improve water quality stability & efficiency of polishing resins
- High pressure rated housings, proprietary sealing, and double O-ring design ensures operational confidence
- Cartridge color, label, and RFID recognition prevent incorrect installation

#### **2. Ergonomic dispenser with 2.4" color touch screen**

- Two dispensers for one system, one for dispensing Type 3 or RO water & another for Type 1 Ultrapure Water
- Intuitive display - water quality with temperature compensation, volumetric dispensing and flow rate
- System alerts are displayed on the touch screen
- Effortless adjustment - dispensing rate (up to 2 L/min), manual and volumetric dispensing
- Choice of final filters: Bio Filter and 0.22 µm final filter
- Two dispenser heights for the ultimate in flexibility

#### **3. Storage Tank**

- A 10 L quality HDPE tank integrated with the system (standard)
- Extendable upto 30/60/100/350 L tank if needed (optional)





## Main Applications

### Ultrapure Water

- HPLC mobile phase preparation
- Preparation of reagent blank solutions
- Sample diluent for GC, HPLC, ICP-MS or other analytical techniques
- Preparation of buffers and culture media for cell culture
- Preparation of molecular biology reagents, etc.

### RO Pure Water

- Washing machine for glassware cleaning
- Feed water for laboratory animals
- Feed water for humidifiers, autoclaves, etc.
- Water supply for ultrapure water systems
- 

## Main Specification

### **Feed Water Requirements**

- Feed Water – Potable Tap Water
- Feed water conductivity < 2000  $\mu\text{S}/\text{cm}$  or TDS < 1000 ppm
- Feed water pressure – (2-6) bar
- Operating temperature – (5 – 35)  $^{\circ}\text{C}$
- Feed water TOC < 2000 ppb

### **Flow rate**

- Type 3 RO based production rate – 24 L/hr.
- Type 3 RO based water dispensing rate - Upto 2 L/min
- Type 1 or Ultrapure Water dispensing flow rate - Upto 2 L/min

### **Product Water Quality**

- Type 3 or RO based water quality (@25 $^{\circ}\text{C}$ ) - Typically > 90% Ionic rejection, when compared to the feed water conductivity
- Type 1 Ultrapure water resistivity (@25 $^{\circ}\text{C}$ ) – 18.2  $\text{M}\Omega\cdot\text{cm}$
- Type 1 Ultrapure water TOC < 5 ppb (If feed water TOC < 30 ppb, preferably with (RO + EDI) technology)
- Particles in Ultrapure water - No particles of > 0.2  $\mu\text{m}$  (with a 0.2  $\mu\text{m}$  final filter or Bio filter unit)
- Microorganisms in Ultrapure water - < 0.01 cfu/ml (with a 0.2  $\mu\text{m}$  final filter or Bio filter)
- Pyrogens (Endotoxins) in Ultrapure water < 0.001 EU/ml (with a Bio filter)
- RNase in Ultrapure water < 0.5 pg/ml (with a Bio filter)
- DNase in Ultrapure water <10 pg/ml (with a Bio filter)



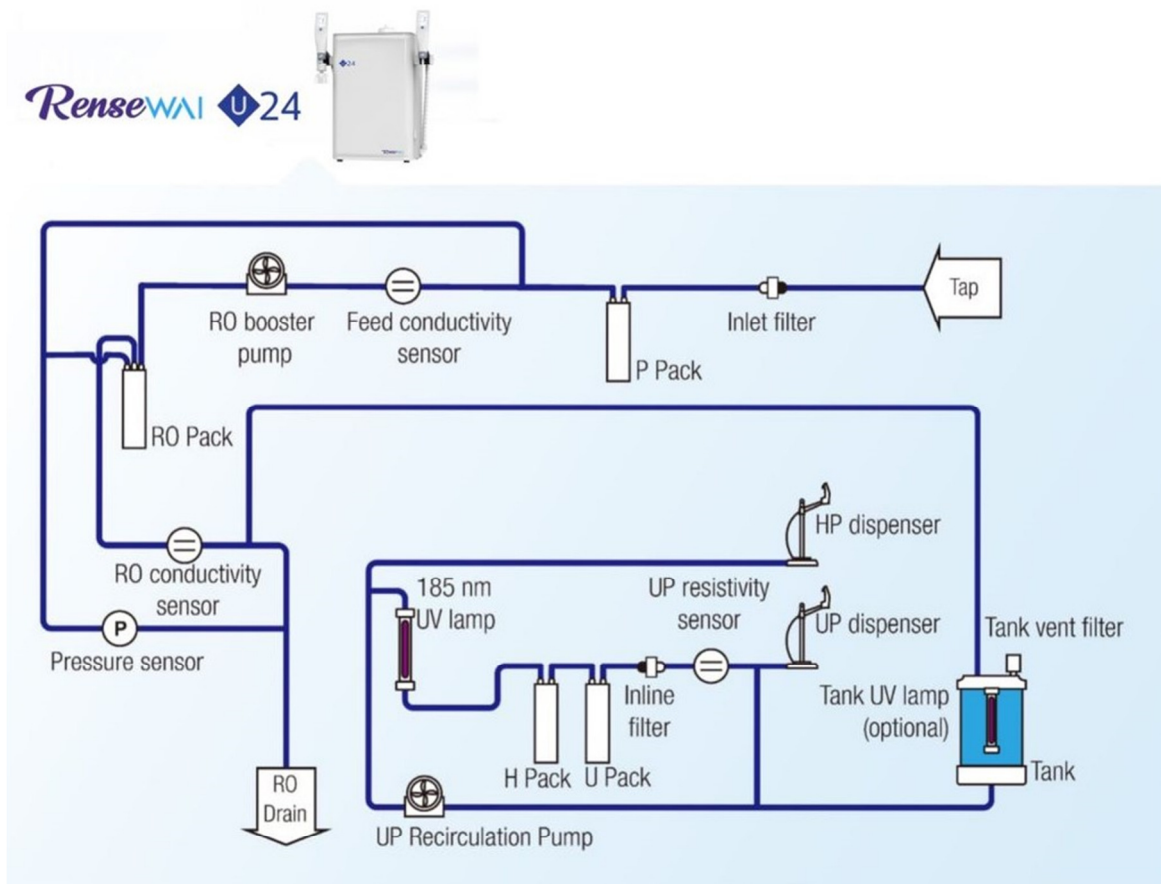
# RenseWAI

## Power

- Input Voltage - 110 - 240 VAC
- Operating Voltage - 24 VDC
- Wattage < 200 W



## Flow Chart





## Contents of the Set

### **RenseWAI U24 System Set consists of :-**

1. Main system
2. RO membrane
3. UV (pre-installed)
4. P Pak
5. H Pak
6. U Pak
7. Final Filter 0.22 micron unit
8. 10L tank (preinstalled)
9. Tank vent filter
10. Three stage prefiltration kit (PF Kit)  
(1 micron + 10 micron + Carbon Cartridge of 3 micron pore size, included inside PF Kit.  
Quantity – 1 no. each, all 10" long)
11. External feed booster pump, with high & low pressure auto cutoff switch included.  
(Included / needed only in-case, if potable feed water pressure is less than 2 bar)

### **Photographs (Representative only)**



(Disclaimer – Please note photographs are for representation purpose only & can vary from the actual system)

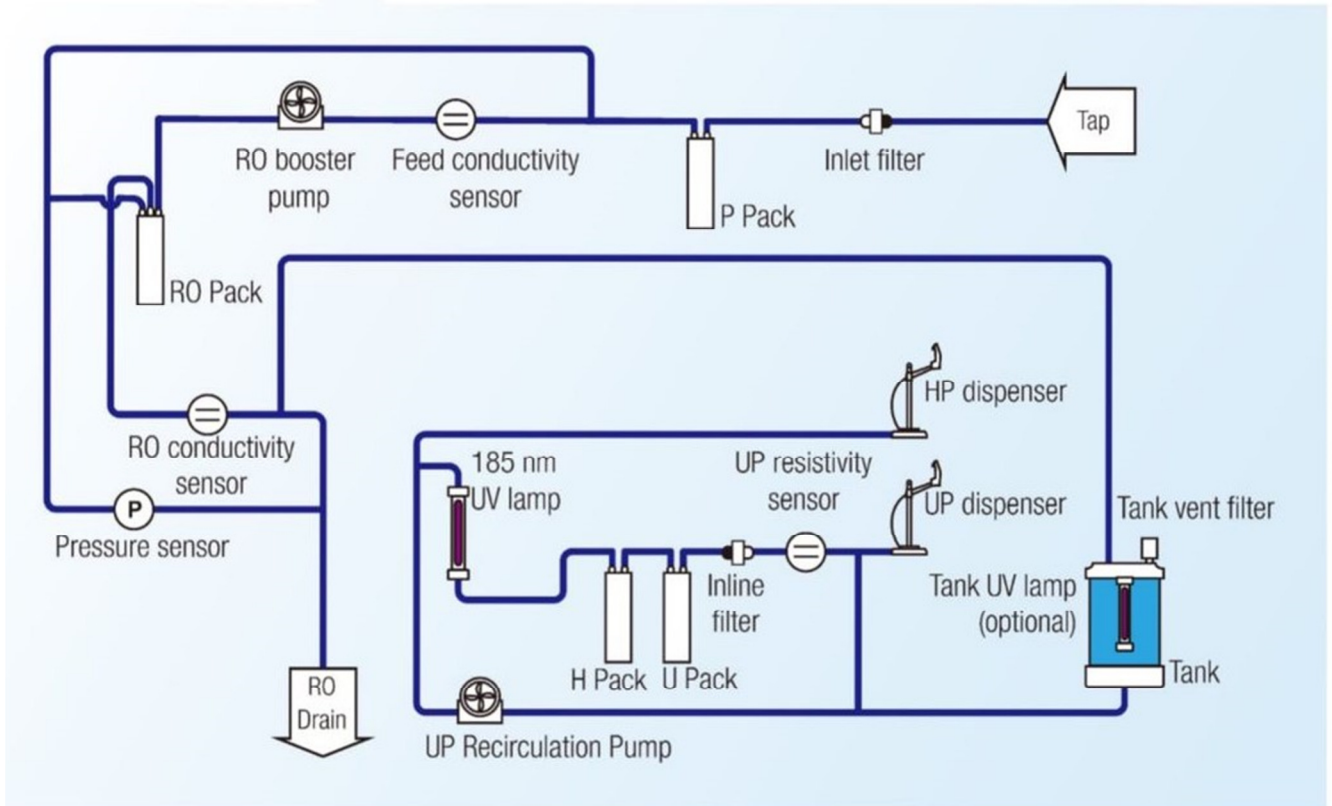


RenseWAI is the registered trademark of M/s. Pramuk Healthcare



# RenseWAI

RenseWAI U24





# RenseWAI



# RenseWAI





# RenseWAI

